

be in motion
7000 8000 9000 10000

be in motion

DSD DS DA DSC DST DSL DSD-IPG BPx

Motors

10 20 30 40 50 60 70 80 90 100 110 120



DSD 28 – 100
Dynamic Motors

DS 45 – 200
DA 100 – 280
General Purpose

DSC 45 – 100
Compact Motors

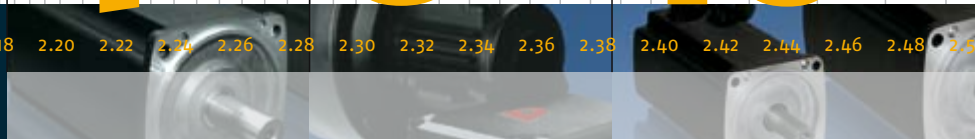
4

6

10

2

2.02 2.04 2.06 2.08 2.10 2.12 2.14 2.16 2.18 2.20 2.22 2.24 2.26 2.28 2.30 2.32 2.34 2.36 2.38 2.40 2.42 2.44 2.46 2.48 2.50



Baumüller supplies intelligent drives for the world's machines

Companies that develop intelligent, forward-looking machine concepts have to increasingly rely upon interdisciplinary co-operation – often beyond corporate boundaries. Maximum system performance requires specialization and a focused approach to the design. As a system partner to machine builders, we do not offer just a drive or a controller. Our interest is in the functioning system as a whole and its optimization by means of our products and services. Therefore, we are engaged in continuous research at Baumüller laboratories. Here we develop modern solutions for automation and drive technology.

Our approach is acclaimed throughout most segments of machine building industry. We plan, develop and manufacture optimized automation and drive systems for a wide array of applications – ranging from the one-off machine to large-scale production machines.

In addition, we offer entire drive systems, from the control cabinet complete with operator panels, PLC, I/O and open-loop control devices as well as converters and motors. In doing so, we assist our customers when a system is being commissioned with extensive engineering, support, and service. This support continues beyond commissioning into the actual production operation of the machine. Technical expertise, innovation, flexibility and absolute customer orientation are the distinctive features of our corporate philosophy. This is also reflected in our motto: “be in motion”.

You will find up-to-date information, dates and projects when you visit:

www.baumueller.com

DST 135 – 315
High Torque Motors

12

DSL 56
Linear Servo Motors

14

DSD 45–56–IPG
Integrated planetary
gearing

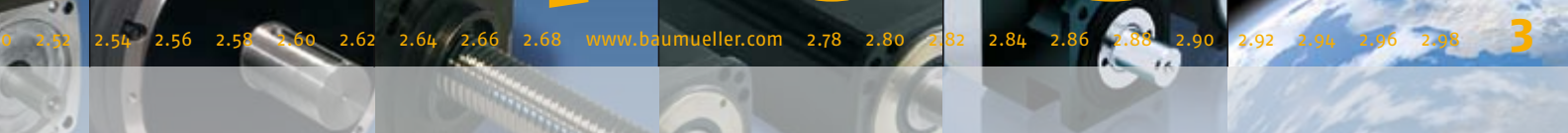
16

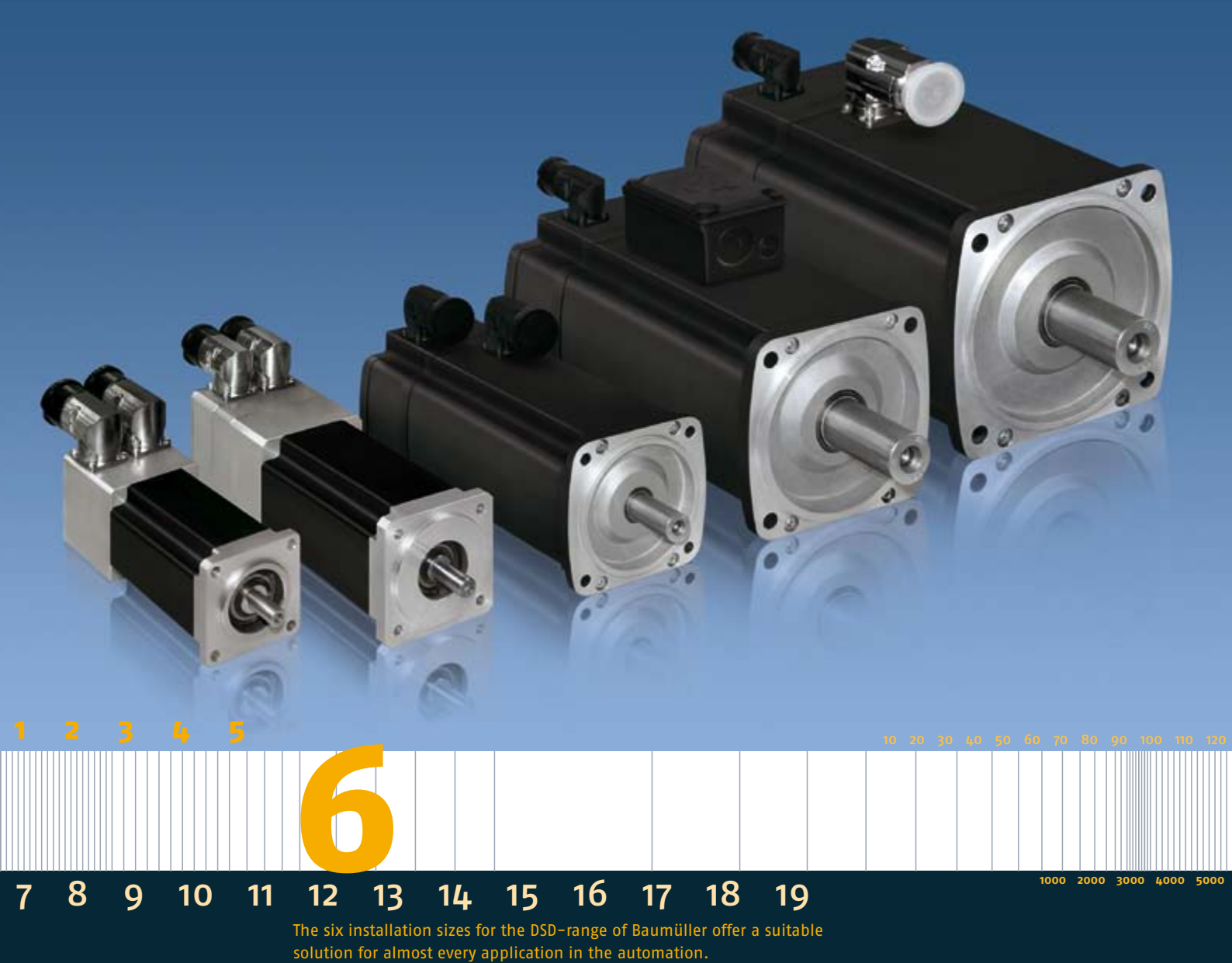
BPx
Planetary Gearing

18

Baumüller: Your Partner
for Automation

22





DSD – Dynamic Motors

The servo motors for highly dynamic applications with the highest requirements of acceleration capacity and the best start-stop qualities, such as for:

- ⊙ packaging machines
- ⊙ textile machines
- ⊙ plastics machines
- ⊙ handling machines
- ⊙ special machines
- ⊙ small robots

DSD 28 – 100 – Dynamic Motors

- ◎ high torque accuracy
- ◎ high speed
- ◎ almost no cogging effect
- ◎ compact frame size with high power density
- ◎ maximum dynamic response due to excellent torque-inertia ratio
- ◎ smooth housing surface – not easily soiled
- ◎ sleek, uniform housing
- ◎ permanent field synchronous servo motors
- ◎ main connection via terminal box or connector (DSD 28 – 45 only via connector)
- ◎ IP44, other protection type on request (DSD 28 – 36)
- ◎ IP65 non-ventilated, IP54 surface-ventilated with fan (DSD 45 – 100)
- ◎ encoders: resolver, SinCos-encoder (optional)
- ◎ all types optionally with brake



The DSD-range is available with air-cooling option.



Capacity



Torque



Acceleration



DSD 28 – 100 – Technical Data

		DSD 28	DSD 36	DSD 45	DSD 56	DSD 71	DSD 100
P_N	[kW]	0.57	0.90	1.37	5.4	10.1	17
n_M	[min ⁻¹]	6000	6000	4500	4500	4500	4500
J	[kgcm ²]	0.20	0.42	1.9	5.7	16.5	77
M_0	[Nm]	1.2	2.8	5.2	15.5	34.5	89
M_{0max}	[Nm]	3.9	8.4	25	52	100	210

		DSD 28	DSD 36	DSD 45	DSD 56	DSD 71	DSD 100
P_N	[hp]	0.76	1.21	1.8	7.2	13.5	22.8
n_M	[min ⁻¹]	6000	6000	4500	4500	4500	4500
J	[lb in ²]	0.07	0.14	0.65	1.9	5.6	26.3
M_0	[lbf ft]	0.89	2.07	3.8	11.4	25.4	65.6
M_{0max}	[lbf ft]	2.88	6.20	18	38	74	155

Subject to alterations. The stated data are maximum values.
For details please have a look in the technical documentations.



DS / DA – Motors

The servo motor for all applications with strict energy efficiency requirements, for example:

- ⊙ printing machines
- ⊙ packaging machines
- ⊙ textile machines
- ⊙ plastics machines
- ⊙ handling machines
- ⊙ special machines
- ⊙ general mechanical engineering

DS 45–100 – General Purpose (Synchronous)

- ⊙ high torque accuracy
- ⊙ high speed
- ⊙ compact design
- ⊙ no wear and maintenance free
- ⊙ permanent field servo motors
- ⊙ IP64/65 non-ventilated, IP54 surface-ventilated (DS 56–100)
- ⊙ encoders: resolver, SinCos-encoder (optional)
- ⊙ all types optionally with brake



The DS-range is also available with air-cooling option.



180 200 225

Capacity

Torque

Acceleration

DS 45–100 – Technical Data

		DS 45	DS 56	DS 71	DS 100
P_N	[kW]	1.26	5.80	11.80	23.56
n_M	[min ⁻¹]	6000	6000	6000	4000
J	[kgcm ²]	3.4	15.7	50.2	175
M_0	[Nm]	3.2	13.2	31.0	84.0
M_{0max}	[Nm]	15	32	73	160

		DS 45	DS 56	DS 71	DS 100
P_N	[hp]	1.7	7.8	15.8	31.6
n_M	[min ⁻¹]	6000	6000	6000	4000
J	[lb in ²]	1.16	5.36	17.15	59.80
M_0	[lbf ft]	2.4	9.7	22.9	62.0
M_{0max}	[lbf ft]	11	24	54	118

Subject to alterations. The stated data are maximum values.
For details please have a look in the technical documentations.

DS 100 – 200 – General Purpose (Synchronous)

- ⊙ excellent smooth running characteristics
- ⊙ high torque accuracy
- ⊙ extremely flexible due to modular design
- ⊙ compact and robust design
- ⊙ high level of efficiency
- ⊙ permanent field servo motors
- ⊙ unventilated IP54, ventilated IP23, IP54
- ⊙ water-cooled IP54
- ⊙ encoders: resolver, SinCos-encoder (optional)
- ⊙ all types optionally with brake



DS motors are available as air- and water-cooled model.



DS 100 – 200 – Technical Data

		DS 100	DS 132	DS 160	DS 200
P_N	[kW]	38	92	150	290
n_M	[min ⁻¹]	3000	3000	3000	2700
J	[kgm ²]	0.022	0.084	0.25	0.79
M_0	[Nm]	121	293	477	1025
M_{0max}	[Nm]	320	680	1180	2120

		DS 100	DS 132	DS 160	DS 200
P_N	[hp]	51	123	201	389
n_M	[min ⁻¹]	3000	3000	3000	2700
J	[lb ft ²]	0.52	2.0	6.0	18.8
M_0	[lbf ft]	89	216	352	756
M_{0max}	[lbf ft]	236	502	870	1564

Subject to alterations. The stated data are maximum values.
For details please have a look in the technical documentations.

DA 100 – 280 – General Purpose (Asynchronous)

- ⊙ excellent smooth running characteristics
- ⊙ model as asynchronous cage rotor
- ⊙ extremely flexible due to modular design
- ⊙ large field weakening range
- ⊙ high level of efficiency
- ⊙ compact and robust design
- ⊙ high torque accuracy
- ⊙ unventilated IP54, ventilated IP23, IP54
- ⊙ water-cooled IP54
- ⊙ encoders: resolver 2-pole, SinCos-encoder (optional)
- ⊙ all types optionally with brake



The DA main drives are available as air- and water-cooled model.



Capacity

Torque

Acceleration

DA 100 – 280 – Technical Data

		DA 100	DA 132	DA 160	DA 180	DA 225	DA 280
P_N	[kW]	15	50	120	200	265	380
n_M	[min ⁻¹]	3000	3000	3000	3000	1750	1200
J	[kgm ²]	0.034	0.120	0.346	0.676	2.063	5.10
M_0	[Nm]	47	159	382	637	1446	3024
M_{0max}	[Nm]	134	344	917	1528	2979	5200

		DA 100	DA 132	DA 160	DA 180	DA 225	DA 280
P_N	[hp]	20	67	161	268	355	509
n_M	[min ⁻¹]	3000	3000	3000	3000	1750	1200
J	[lb ft ²]	0.81	2.84	8.20	16.0	48.9	121
M_0	[lbf ft]	35	117	282	470	1067	2230
M_{0max}	[lbf ft]	99	254	676	1127	2197	3835

Subject to alterations. The stated data are maximum values.
For details please have a look in the technical documentations.



30

The DSC 45-100 is a series of high-torque servo motors that are up to 30% more compact than conventional servo designs.

DSC – Compact Servo Motors

With its new DSC servo motors, Baumüller is making the torque motor servo-ready. This series focuses on improved performance by increasing torque densities. This also drastically reduces the volume of the device. In spite of the increased torque, typical speed ranges of up to 4000 rpm is still provided by these motors. The new DSCs are up to 30% more compact than conventional servo motors. The DSC 45-100 series features a smooth housing surface contamination build-up. These motors are particularly easy to mount and offer a high environmental protection classification.

DSC 45 – 100 – The compact series

- ◎ Permanent magnet synchronous servo motors
- ◎ Compact design with high power density
- ◎ Excellent smooth running characteristics
- ◎ High overload capability
- ◎ Almost no cogging torque
- ◎ Smooth housing surface – easy to keep clean
- ◎ Slim, uniform housing design
- ◎ Main connection and encoder connection via rotatable connectors
- ◎ IP65 type of protection, totally enclosed non-ventilated
- ◎ Encoder: resolver, sincos (optional)
- ◎ All types available with brake as an option



A forced air-cooled version of the DSC series is in preparation.



140 150 160

Capacity			
Torque			
Acceleration			

DSC 45 – 100 – Technical Data (non-ventilated)

		DSC 45	DSC 56	DSC 71	DSC 100
P_N	[kW]	1.1	2.8	6.3	10.8
n_M	[min ⁻¹]	4000	3000	3000	2000
M_0	[Nm]	5.9	13.5	29	60
M_{0max}	[Nm]	25.5	48.0	84	123
Length*	[mm]	220	240	271	295

		DSC 45	DSC 56	DSC 71	DSC 100
P_N	[hp]	1.5	3.8	8.4	14.5
n_M	[min ⁻¹]	4000	3000	3000	2000
M_0	[lbf ft]	4.35	9.96	21.4	44.3
M_{0max}	[lbf ft]	18.8	35.4	62.0	91.0
Length*	[in]	8.7	9.4	10.7	11.6

* Length not including shaft

Subject to change. Technical documentation in preparation



Baumüller offers the DST-range up to 13,500 Nm torque and herewith provides the maximum dynamic in the direct drive technology.

DST High Torque Motors

The high-torque synchronous motors for application with maximum torque requirements, such as for:

- ⊙ plastics machines
- ⊙ rotary tables or swivel axis
- ⊙ printing machines
- ⊙ press technology
- ⊙ winders
- ⊙ wire-drawing machines
- ⊙ stretching units
- ⊙ machine tools
- ⊙ woodworking machines
- ⊙ special machines

DST 135 – 315 – Powerful High Torque Motors

- ◎ good smooth running characteristics
- ◎ energy-efficient thanks to highly efficient drive package
- ◎ appropriate for demanding direct drive technology
- ◎ high torques at low speeds
- ◎ low noise
- ◎ water cooling using stainless steel
- ◎ compact and robust design
- ◎ smooth housing surface – not easily soiled
- ◎ permanent field servo motors
- ◎ degree of protection IP54
- ◎ encoders: resolver, SinCos-encoder (optional)
- ◎ other encoders available on request



The DST High Torque Motors are available as water-cooled model.



13,600 13,700 13,800

Capacity	<input type="radio"/>	<input checked="" type="radio"/>	<input type="radio"/>
Torque	<input type="radio"/>	<input type="radio"/>	<input checked="" type="radio"/>
Acceleration	<input type="radio"/>	<input checked="" type="radio"/>	<input checked="" type="radio"/>

DST 135 – 315 – Technical Data

		DST 135	DST 200	DST 260	DST 315
P_N	[kW]	30.5	71	170	175
n_M	[min ⁻¹]	750	450	450	300
J	[kgm ²]	0.28	1.3	4.5	11.6
M_N	[Nm]	402	1585	4840	6130
M_{0max}	[Nm]	845	3450	9750	13500

		DST 135	DST 200	DST 200	DST 315
P_N	[hp]	40.9	95.2	228.0	234.7
n_M	[min ⁻¹]	750	450	450	300
J	[lb ft ²]	6.64	30.8	107.0	275.3
M_N	[lbf ft]	296	1169	3570	4521
M_{0max}	[lbf ft]	623	2545	7190	9957

Subject to alterations. The stated data are maximum values.
For details please have a look in the technical documentations.



3 4 5 6 7

2000 3000 4000 2000 3000 4000

2

49 50 51 52 53 54 55 56

167 250 333

With its two variants the DSL 56 ensures optimal linear motions: as a roller screw assembly for high forces and high velocities or as a ball screw assembly in simple applications for low-cost linear drives.

DSL 56 – Three-Phase Synchronous Linear Actuator

Compactness, dynamic response and high levels of torque, effectively implemented in a linear motion – these are the features of the DSL 56.

With its integrated screw assembly the DSL 56 converts rotary motion to linear motion. The link between Baumüller servo motors and an integrated screw assembly is ideally suited for applications with maximum demands in terms of force and dynamic response, in a compact design.

There are two models available: the roller screw assembly for high forces and high velocities or the lower-cost ball screw assembly for simpler applications. Consequently, the DSL 56 optimally meets the requirements of fields of application such as robotics, welding tongs and handling but also in the printing and plastics industries.

DSL 56 – Linear Servo Motors

- ◎ drive-shaft support for high radial forces
- ◎ alternatively ball screw, respectively planetary screw assembly
- ◎ spindle drive can be replaced without motor disassembly
- ◎ brake assembly without changing total length
- ◎ high dynamics and maximum force due to servo technology
- ◎ multiple ways of installation according to IEC34-7 – IM 3689 / IM 9389
- ◎ encoder system standard resolver 2-pole (other encoder type on request)
- ◎ aluminum case
- ◎ degree of protection IP54
- ◎ all types optionally with brake



The DSL linear-servo drive is available as air-cooled model.



2000 3000 4000



DSL 56 – Technical Data

		threaded spindle drive 21x5			ball screw 32x5
		DSL 56 M	DSL 56 M	DSL 56 M	DSL 56 M
n_M	[min ⁻¹]	2000	3000	4000	2000
F_0	[kN]	6.0	6.0	6.0	6.0
F_{0max}	[kN]	20	20	20	7.0
v_N	[mm/s]	167	250	333	167

		threaded spindle drive 21x5			ball screw 32x5
		DSL 56 M	DSL 56 M	DSL 56 M	DSL 56 M
n_M	[min ⁻¹]	2000	3000	4000	2000
F_0	[lbf]	1349	1349	1349	1349
F_{0max}	[lbf]	4496	4496	4496	1574
v_N	[in/s]	6.55	9.84	13.1	6.55

rated torque brake: 15 Nm, lifetime: >10 m double strokes, stroke: 155 mm, allowed radial load: >200 N
Subject to alterations. The stated data are maximum values. For details please have a look in the technical documentations.



1 2 3 4 5 6 7

10 20 30 40 50 60 70 80 90 100 110 120

8

5 6 7 8 9 10 11 12 13 14 15 16 17 18 19

1000 2000 3000 4000 5000

The geared motor from Baumüller, the DSD-IPG, is distinguished by its high torque and excellent dynamic response qualities. Offering transmission ratios of $i=4$ and $i=8$, the DSD-IPG is a compact and dynamic motor that meets the highest torque requirements.

DSD-IPG – Three-Phase Synchronous Gear Motors

Thanks to the integrated planetary gearing, the DSD-IPG, available in frame sizes 45 and 56, is ideal for high-torque applications that require a high dynamic response.

The DSD has an overload capacity that is up to 40 % greater than in comparable servo motors of the DS series. With these qualities, the DSD-IPG is the perfect candidate for handling, robotics and packaging applications.

In spite of the transmission ratios of $i=4$ and $i=8$, the motor fully retains its dynamic characteristics. The extremely compact DSD-IPG paves the way for optimal space utilization. Several axes can, for example, be placed side by side in a space-saving manner. Depending on the application, Sincos encoders or brakes can be combined with the gearing.

DSD 45 – 56-IPG – Gear Motors

The concept offers:

- ⊙ high output torque
- ⊙ high dynamic response
- ⊙ low moment of inertia
- ⊙ compact frame size
- ⊙ sleek, uniform housing
- ⊙ smooth housing surface – not easily soiled
- ⊙ optimized transmission stepping
- ⊙ high protection type IP65
- ⊙ encoder system standard resolver (other encoder type on request)
- ⊙ all types optionally with brake



The DSD-IPG is available as air-cooled model.

Features of the integrated planetary gearing include:

- ⊙ low circumferential backlash (<3')
- ⊙ high stability
- ⊙ high efficiency (98 %)
- ⊙ transmission ratios $i=4$ und $i=8$
- ⊙ low noise level (<65 dBA)
- ⊙ any required mounting position
- ⊙ lifetime lubrication



Capacity

Torque

Acceleration



DSD 45 – 56-IPG – Technical Data Motor / Gear

		DSD 45-IPG4	DSD 45-IPG8	DSD 56-IPG4	DSD 56-IPG8
n_M	[min ⁻¹]	1125	562	1125	562
M_0	[Nm]	20.4	40.8	45.1	90.2
M_{0max}	[Nm]	98	108	204	245

		DSD 45-IPG4	DSD 45-IPG8	DSD 56-IPG4	DSD 56-IPG8
n_M	[min ⁻¹]	1125	562	1125	562
M_0	[lbf ft]	15.05	30.1	33.25	66.5
M_{0max}	[lbf ft]	72.3	79.7	150.3	180.7

Subject to alterations. The stated data are maximum values.
For details please have a look in the technical documentations.



4 5 6 7 8 9 10 11 12 13 14

The three models high performance, standard and economy of the Baumüller planetary gearings provide compact and economical drive solutions at the highest technology level.

BPx – Baumüller Planetary Gearing Range

In connection with our standard DS/DSD servo drives, the BPx planetary gear range is optimally suitable for applications that require maximum standards of torque and dynamics. In combination with a high number of transmission ratio gradings, almost any possible combination of motor and gear allow an optimal adaptation of customized application.

Three models are available:

- ⊙ gear models in the so-called HP (= High Performance) version are available for highest torques and speeds
- ⊙ for applications with standard requirements the model BPS is a gear solution of a high technology level
- ⊙ the model range BPE (= Economy) is used for basic applications

The features of the BPx range are:

- ⊙ low circumferential backlash (<3')
- ⊙ high stability
- ⊙ high efficiency (98 %)
- ⊙ great choice of gear ratios
- ⊙ low noise level (<65 dBA)
- ⊙ high quality (ISO 9001)
- ⊙ any required mounting position
- ⊙ lifetime lubrication

In connection with our standard motor ranges DS and DSD the concept offers:

- ⊙ high driving torque
- ⊙ high dynamics
- ⊙ low total moment of inertia
- ⊙ compact design
- ⊙ high protection type IP65



BPF HP



BPS HP

High Performance Range BPx HP

BPx HP is the planetary gear for highest torque speeds, depending on requirement as standard or flange model. The patented system for venting in the gear prolongs the lifetime of the mechanical components. The gears of the BPx range have an optimal connection to the motor shaft due to a special clamping piece. Therewith the concentricity is optimized, the noise is minimized and assembly errors are excluded.



BPx HP – Technical Data

		BPx 36 HP	BPx 45 HP	BPx 56 HP	BPx 71 HP
M_0	[Nm]	110	220	520	1000
$n_{input\ max}$	[min ⁻¹]	10000	8000	7000	6000
i		4 – 64	4 – 64	4 – 64	4 – 64

		BPx 36 HP	BPx 45 HP	BPx 56 HP	BPx 71 HP
M_0	[lbf ft]	81	162	384	738
$n_{input\ max}$	[min ⁻¹]	10000	8000	7000	6000
i		4 – 64	4 – 64	4 – 64	4 – 64

Subject to alterations. The stated data are maximum values.
For details please have a look in the technical documentations.

Standard Range BPS

The BPS are standard gears for connection to standard flange and shaft extension of the DS and DSD motor ranges by Baumüller.

The standard range BPS is also available as angular gear for applications with interference contour.

BP	X	FS	HP	type code BPx:	
				HP	High Performance
				FS	Frame Size
	X	S			= Standard
		SA			= Standard Angle
		F			= Flange
		E			= Economy
		EA			= Economy Angle
		EF			= Economy Flange
BP					Baumüller Planetary



BPS



BPSA



BPS – Technical Data

		BPS 36	BPS 45	BPS 56	BPS 71	BPS 100
M_0	[Nm]	77	120	260	910	1800
$n_{input\ max}$	[min ⁻¹]	14000	10000	8500	6500	6000
i		3 – 100	3 – 100	3 – 100	3 – 100	3 – 100

		BPS 36	BPS 45	BPS 56	BPS 71	BPS 100
M_0	[lbf ft]	57	89	192	671	1328
$n_{input\ max}$	[min ⁻¹]	14000	10000	8500	6500	6000
i		3 – 100	3 – 100	3 – 100	3 – 100	3 – 100

Subject to alterations. The stated data are maximum values.
For details please have a look in the technical documentations.

Economy Range BPE

The so-called economy version (standard or angle) is available for basic applications with low torque and low speed requirements.



BPE – Technical Data

	BPE 20	BPE 30	BPE 40	BPE 45	BPE 56	BPE 60	BPE 80
M_0 [Nm]	20	44	130	130	260	260	800
$n_{input\ max}$ [min ⁻¹]	18000	13000	7000	7000	6500	6500	6500
i	3 - 512	3 - 512	3 - 512	3 - 512	3 - 512	3 - 512	3 - 512

	BPE 20	BPE 30	BPE 40	BPE 45	BPE 56	BPE 60	BPE 80
M_0 [lbf ft]	14.8	32.5	95.9	95.9	192	192	590
$n_{input\ max}$ [min ⁻¹]	18000	13000	7000	7000	6500	6500	6500
i	3 - 512	3 - 512	3 - 512	3 - 512	3 - 512	3 - 512	3 - 512

Subject to alterations. The stated data are maximum values.
For details please have a look in the technical documentations.



Automation solutions
Planning & development
Project management
Hardware & software engineering
Control cabinet design
Electrical installation
Components
Commissioning
Expansion of existing systems
Technical support worldwide
Assembly
Training
Service
Maintenance
Repair
Retrofit

362 363 364

365

349 350 351 352 353 354 355 356 357 358 359 360 361

18 19 20 21 22 23 24

1 2 3 4 5 6 7

You can contact us on our Service Hotline +49 (0)911 5432-133 twenty-four hours a day on 365 days of the year.

Automation Solutions by Baumüller

Co-operation with development partners, who contribute to the entire solution in a system-oriented way, is a pre-condition if you want to concentrate on your own competencies in the field of machine building. If your automation partner supports you during the realization of your system concept, you receive the development, project management and the optimal adaptation of a drive solution from one source.

As an innovative system partner of the capital goods industry, Baumüller is the competent solution provider for automation, electronic and drive technology and control technique during the entire lifetime of a system.

It goes without saying that in addition to our complete package consisting of engineering, installation, commissioning and services, we offer customer service with perfect coverage – namely anywhere in the world and at any time.

We are the partner for your success.



Planning

Together with you we design an economical and technological future-oriented system.

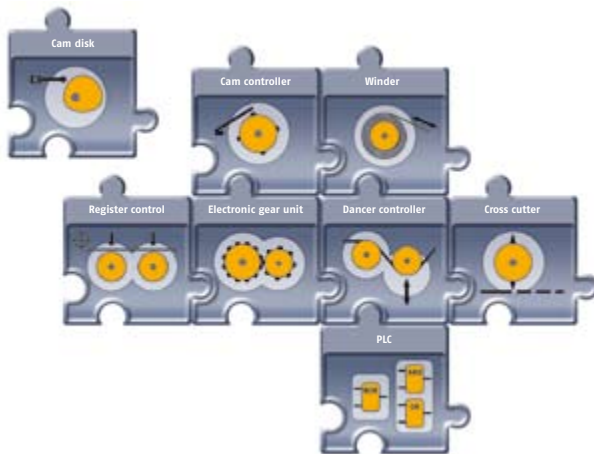
Project management

Our project leaders ensure the implementation of turnkey equipment.

Development

Irrespective of the industry, various motion and control functions occur from time to time in slightly adapted forms.

Baumüller displays these frequently occurring, standardized functionalities in function modules that can easily and quickly be integrated in the system, followed by an adaptation to individual needs.



Industry solutions

We know the conditions of your industry and speak the language of your customers. From printing machines with high demand on synchronization of the drives, via control-intensive applications in the plastics industry to the requirements in conveyor technology, assembling and storage systems, we implement system concepts of the most diverse application specifications.



Hardware and software engineering

From the dimensioning via cabling to air conditioning of your control cabinets, we design your hardware taking account of all design and manufacturing options that are technologically innovative, user-oriented and as economical as possible.



Control cabinet design and wiring

We implement individual and user-oriented solutions from sheet metal production to completely wired control cabinet. Our strengths are special designs and special production in small to medium series.

Installation / Commissioning

You construct the mechanics of your system, we install the electronics. Whether inhouse or worldwide at your customer's site – with our software solutions and drive technologies we set your machine ideas in motion.

For the worldwide installation and commissioning of your systems, we always take account of the respective country-specific standards.



0.1 0.2 0.3 0.4 0.5 0.6 0.7 0.8 0.9



3 4 5 6 7 8 9 10 11 12 13 14 15

Expansion of existing systems

Innovative and customer-specific products require state-of-the-art production methods and machine functions. Using an adaptation or expansion of your existing machine architecture, you quickly achieve an increased flexibility and availability of your systems – while allowing you to estimate your expenses and manage your investments.

Technical support worldwide

Whether it is remote diagnosis and remote maintenance using telecommunication or the Internet, through our 24h-hotline or our contact partners at branch offices onsite in more than 40 locations worldwide – the experts from Baumüller provide full explanations to all your questions concerning automation and drive solutions.



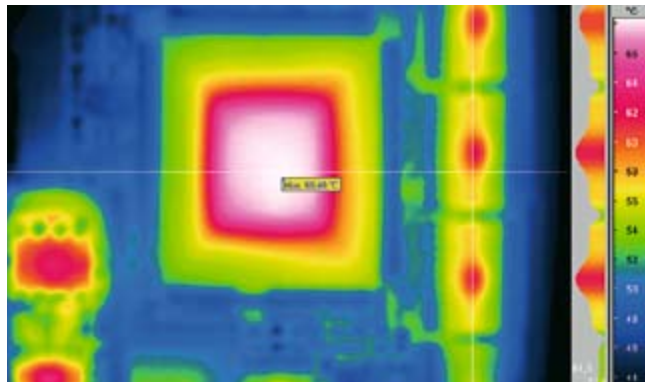
Training

Only with well-trained employees you can quickly respond to a problem. We offer training onsite and in our training center: on the basics of electrical drive engineering, on maintenance of switching stations, controllers and drives, and on selective troubleshooting in the broader range of printing technology and drive engineering. In co-operation with you we create a flexible training program that is specifically tailored to the training needs of your employees.



Service

The correct repair and spare parts must instantly be available to immediately remedy a failure of your system. In co-operation with you we develop an extensive service plan and make a technically sound and cost-optimized selection of components that you should keep on hand. We ensure the functional state of your stock of spare parts and deliver components that are missing in an emergency – day and night via express.



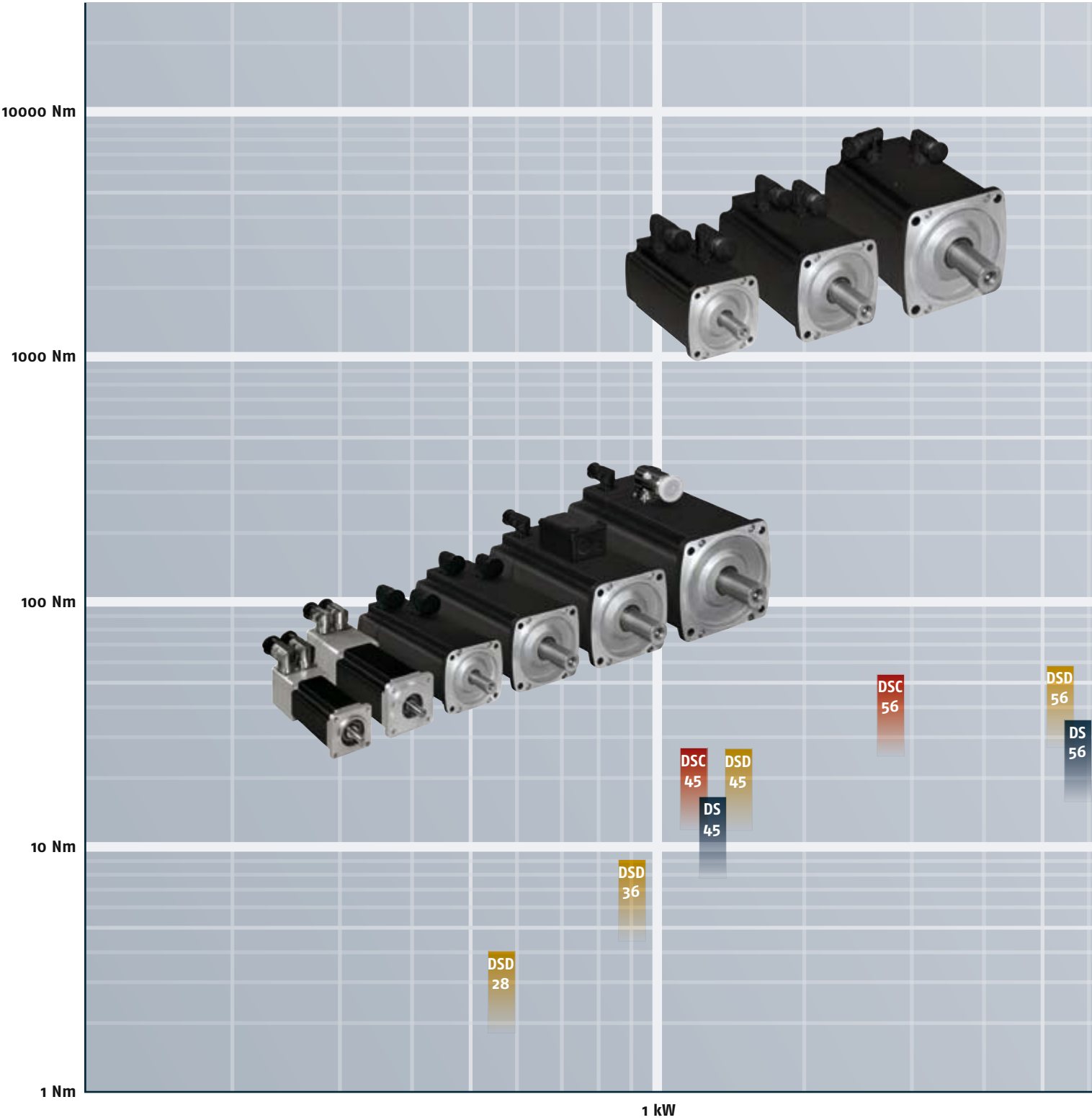
Maintenance

A professionally maintained machine means safety. Safety for the production and safety for your employees. We are your partner for all maintenance of electrics, drive repairs and motor repairs. We recognize in advance any possible causes of failure and increase the availability of your machine – without lost output.

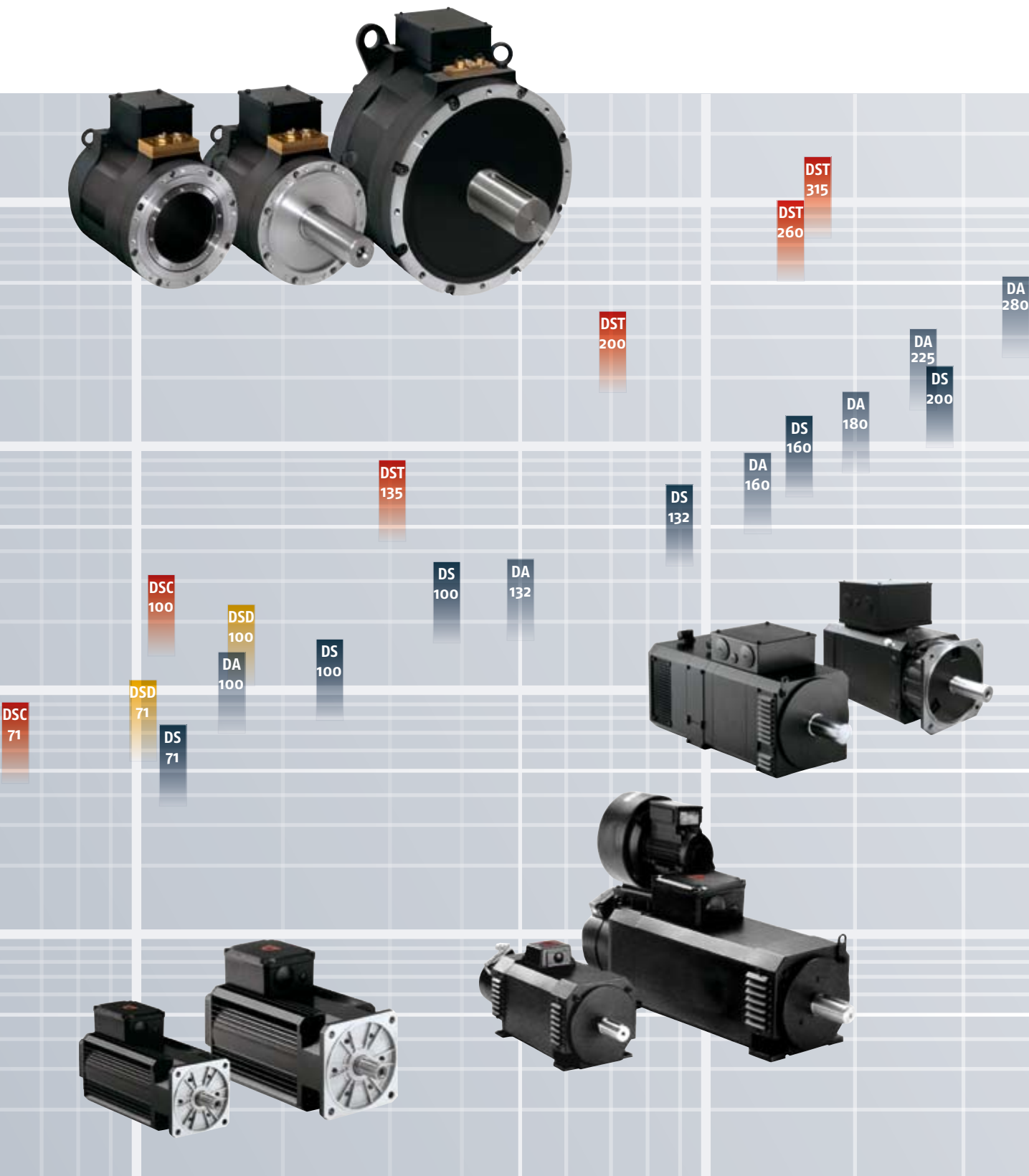
Retrofit

We retrofit existing systems with up-to-date drive systems, control cabinets and user interfaces, so that your system can execute a failure-free, state-of-the-art production. With a retrofit of your existing machine architecture, you are able to achieve higher system flexibility and availability in a very short time.

Range of motors DSD – DSC – DST – DS/DA



The stated data are maximum values.



10 kW

100 kW

Headquarters

Baumüller Nürnberg GmbH
Ostendstraße 84, DE-90482 Nürnberg
T: +49 (0) 911 5432 – 0, F: +49 (0) 911 5432 – 130
www.baumueller.com

Baumüller Anlagen–Systemtechnik GmbH & Co. KG
Ostendstraße 84, DE-90482 Nürnberg
T: +49 (0) 911 54408 – 0, F: +49 (0) 911 54408 – 769
www.baumueller.com

Baumüller Reparaturwerk GmbH & Co. KG
Andernacher Straße 19, DE-90411 Nürnberg
T: +49 (0) 911 9552 – 0, F: +49 (0) 911 9552 – 999
www.baumueller.com

Nürmont Installations GmbH & Co. KG
Am Keuper 14, DE-90475 Nürnberg
T: +49 (0) 9128 9255 – 0, F: +49 (0) 9128 9255 – 333
www.nuermont.com

Subsidiaries

Australia
Baumüller Australia Pty. Ltd.
19 Baker Street, Botany NSW 2019, Sydney, AU
T: +61 2 83350 – 100, F: +61 2 83350 – 169

Austria
Baumüller Austria GmbH
Im Bäckerfeld 17, AT-4060 Leonding
T: +43 (0) 732 674414 – 0, F: +43 (0) 732 674414 – 32

Brazil
NC Service Indústria e Comércio Ltda.
Av. Tamboré, 1217 Barueri–SP, BR-06460-000
T: +55 (0) 11 4195 – 0502, F: +55 (0) 11 4195 – 2479

China
Baumüller Automation Equipment
Trading (Shanghai) Co. Ltd., Cailun Rd. 88,
Pudong Zhangjiang, 201203 Shanghai, CN
T: +86 (0) 21 5855 1533, F: +86 (0) 21 5855 9487

China
Beijing Yanghai Automation Technology Co., Ltd.
Room 1008, No.7, Huaqing Business Building,
Iluaqing Garden, Wudaokou, Haidian District,
100083 Beijing, CN
T: +86 (0) 10 8286 7980, F: +86 (0) 10 8286 7987

China
Sunary Automatic Technology Limited Company
3rd Floor No.476, Chunxiao Rd., Zhangjiang
High–Tech Park Pudong, 201203 Shanghai, CN
T: +86 (0) 21 5080 9898, F: +86 (0) 21 5308 7675

Czech Republic, Slovakia
VAE Prosys s.r.o., Varsavska 9a, CZ-70900 Ostrava
T: +420 596 616 555, F: +420 596 616 777

Denmark
Robotek EL & Teknik A/S
Blokken 31, Postbox 30, DK-3460 Birkerød
T: +45 4484 7360, F: +45 4484 4177

Finland
Kontram Oy
Olarinluoma 12, P.O.Box 88, FI-02201 Espoo
T: +358 9 8866 4500, F: +358 9 8866 4799

France
Baumüller France S.à.r.l., Zone de la Malnoue 39,
Avenue de l’Europe, FR-77184 Emerainville
T: +33 (0) 1 6461 6622, F: +33 (0) 1 6461 6006

France
Baumüller France S.à.r.l. (Strasbourg)
9 rue de la Durance, FR-67100 Strasbourg
T: +33 (0) 3 8840 1251, F: +33 (0) 3 8840 0724

Germany – Darmstadt
Baumüller Nürnberg GmbH
Waldstraße 1, DE-64347 Griesheim
T: +49 (0) 6155 8430 – 00, F: +49 (0) 6155 8430 – 20

Germany – Düsseldorf
Baumüller Nürnberg GmbH
Jacob–Kaiser–Str. 7, DE-47877 Willich–Münchheide
T: +49 (0) 2154 487 – 0, F: +49 (0) 2154 487 – 59

Germany – Dresden
Baumüller Nürnberg GmbH
Nordstraße 57, DE-01917 Kamenz
T: +49 (0) 3578 3406 – 0, F: +49 (0) 3578 3406 – 50

Germany – Freiberg
Nürmont Installations GmbH & Co. KG
Am Junger Löwe Schacht 11, DE-09599 Freiberg
T: +49 (0) 3731 3084 – 0, F: +49 (0) 3731 3084 – 33

Germany – Hannover
Baumüller Nürnberg GmbH
Bohlenweg 10, DE-30853 Langenhagen
T: +49 (0) 511 771 968 – 0, F: +49 (0) 511 771 968 – 77

Germany – München
Baumüller Reparaturwerk GmbH & Co. KG
Meglingerstraße 58, DE-81477 München
T: +49 (0) 89 748 898 – 0, F: +49 (0) 89 748 898 – 55

Germany – Nürnberg
Baumüller Nürnberg GmbH
Ostendstraße 80–90, DE-90482 Nürnberg
T: +49 (0) 911 5432 – 501, F: +49 (0) 911 5432 – 510

Germany – Stuttgart
Baumüller Nürnberg GmbH
Im Ghai 12, DE-73776 Altbach
T: +49 (0) 7153 61036 – 0, F: +49 (0) 7153 61036 – 29

Germany – Stuttgart
Nürmont Installations GmbH & Co. KG
Im Ghai 12, DE-73776 Altbach
T: +49 (0) 7153 92798 – 0, F: +49 (0) 7153 92798 – 99

Great Britain
Baumüller (UK) Ltd.
14 Redlands Centre, GB–Coulson, Surrey CR5 2HT
T: +44 (0) 208 – 763 2990, F: +44 (0) 208 – 763 2959

India
Baumüller KAT India Pvt. Ltd.
4th Floor, Commerce Avenue, Mahaganesh Colony,
Paud Road, IN-411038 Pune
T: +91 20 254596 82, F: +91 20 254596 84

Italy
Baumüller Italia S.r.l.
Viale Italia 12, IT-20094 Corsico (Mi)
T: +39 02 45100 – 181, F: +39 02 45100 – 426

Netherlands
Baumüller Benelux B.V.
Platinastraat 141, NL-2718 SR Zoetermeer
T: +31 (0) 79 3614 – 290, F: +31 (0) 79 3614 – 339

Poland
Mekelburger Polska
Ul. Kóscielna 39 F/3, PL-60537 Poznań
T: +48 (0) 61 8481 520, F: +48 (0) 61 8481 520

Russia, Kazakhstan
Permanent K&M
Wolokolamskoye Chaussee 73,
Office 517, Moscow, 125424, RU
T: +7 495 9563 867, F: +7 495 7803 429

Slovenia
Baumüller Dravinja d.o.o.
Delavska cesta 10, SI-3210 Slovenske–Konjice
T: +386 3 75723 – 00, F: +386 3 75723 – 32/33

South Africa
Motion Tronic cc
Unit 18 Wareing Park, ZA-3610 Pinetown
T: +27 31 701620, F: +27 86 6150597

South Korea
Bomac Systems
712 Yucheon Factopia, 196 Anyang-7 dong,
Mananku, Anyangsi, Kyungkido 430-017, KR
T: +82 31 467 – 2030, F: +82 31 467 – 2033

Spain
Baumüller Ibérica S.A.
C/ Ausias Marc 13 1º 2º, ES-08010 Barcelona
T: +34 (0) 93 342 69 26, F: +34 (0) 93 270 13 21

Switzerland
Baumüller Suisse S.A.
Rue Galilée 9, CH-1400 Yverdon–les–Bains
T: +41 (0) 24 420 77 – 70, F: +41 (0) 24 420 77 – 79

Switzerland
Baumüller Schweiz AG (Büro Ost)
Oberwiesenstrasse 75, CH-8500 Frauenfeld
T: +41 (0) 52 723 28 – 00, F: +41 (0) 52 723 28 – 01

Thailand
Mr. Tom Sale and Service Co., Ltd.
39/9 Moo 1, Tepkanjana Rd., Tambol Nadee
Amphur Muang, TH-74000 Samutsakorn
T: +66 34 854932-4, F: +66 34 854935

Turkey
Baumüller Motor Kontrol Sistem SAN. VE TIC. LTD. STI
Colak Ismail Sok.No: 31/1, TR-81070 Istanbul–Suadiye
T: +90 (0) 216 372 – 2485, F: +90 (0) 216 372 – 7570

USA
Baumueller Inc.
117 West Dudley Town Road, US–Bloomfield,
CT 06002, T: +1 860 243-0232, F: +1 860 286-3080

USA
Baumueller Inc.
1512 East Algonquin Road, US–Arlington Heights,
IL 60005, T: +1 847 956-7392, F: +1 847 956-7925

USA
Baumueller–Nuermont Corp.
1512 East Algonquin Road, US–Arlington Heights,
IL 60005, T: +1 847 956-7392, F: +1 847 956-7925

USA
Baumueller–Nuermont Corp.
2650 Pleasantdale Road, Suite 15, US–Doraville,
GA 30340, T: +1 678 291-0535, F: +1 678 291-0537

Venezuela, Colombia, Ecuador
Nimbus International C.A.
C.C.Parque Tuy, Local P-18, VE-Occumare del Tuy, 1209
T: +58 239 25 1347, F: +58 239 25 7149



Responsible for content: **Baumüller Nürnberg GmbH** Ostendstraße 80–90 90482 Nürnberg T: +49 (0) 911 5432 – 0 F: +49 (0) 911 5432 – 130 www.baumueller.com
Baumüller Anlagen–Systemtechnik GmbH & Co. KG Ostendstraße 84 90482 Nürnberg T: +49 (0) 911 54408 – 0 F: +49 (0) 911 54408 – 769
Baumüller Reparaturwerk GmbH & Co. KG Andernacher Str. 19 90411 Nürnberg T: +49 (0) 911 9552 – 0 F: +49 (0) 911 9552 – 999